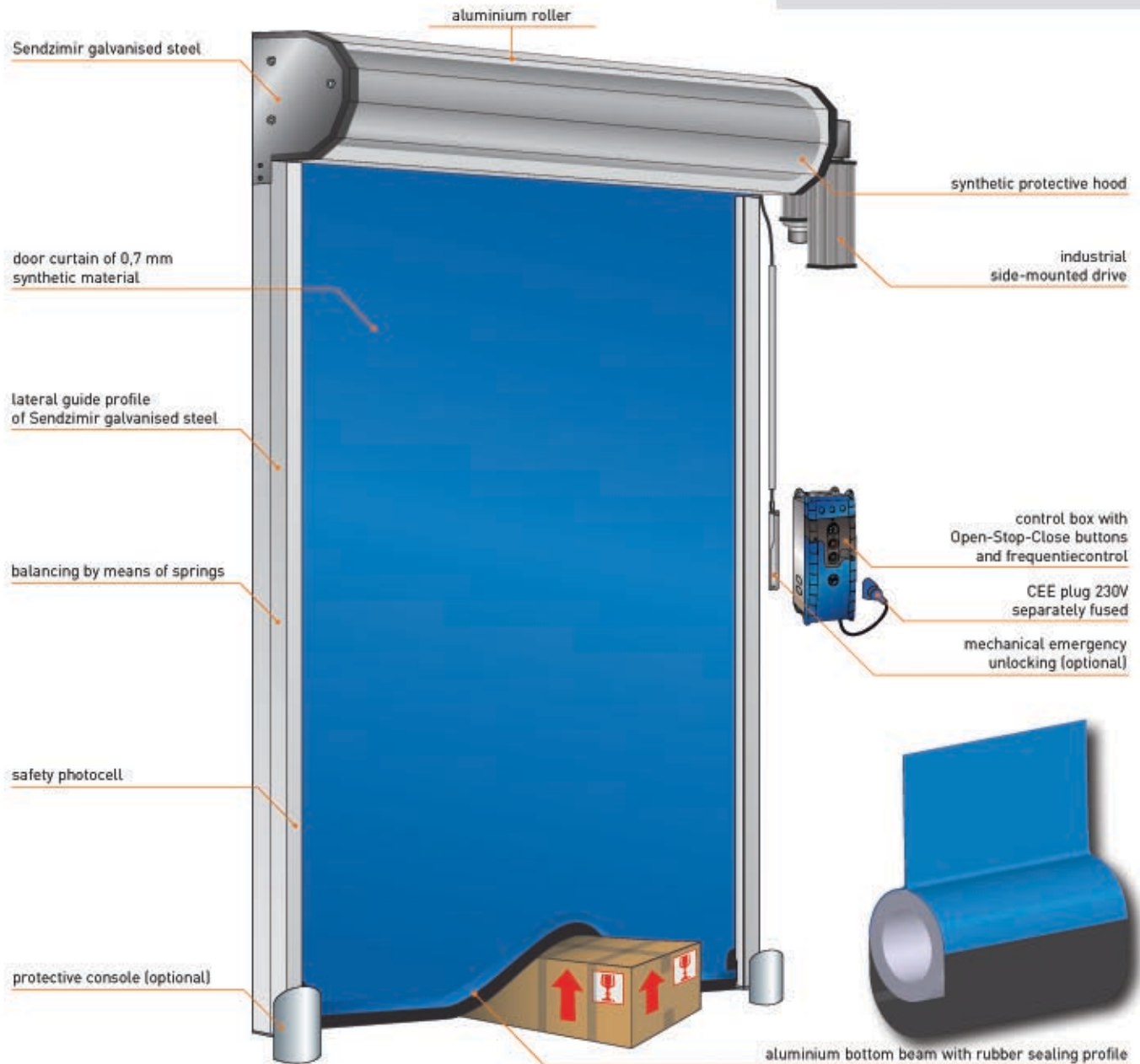


SPEED DOORS



RETAIL

Super fast interior door for retail stores



Properties

- max. W x H = 2250 x 2600 mm
- min. W x H = 700 x 2000 mm
- wind resistance class 0, wind resistant to 3 Beaufort (12 - 19 km/h)
- opening speed max. 2 m/s
- closing speed 0.5 m/s
- 0,7 mm thick door curtain in blue, red, grey, orange, yellow, black or white
- full colour printing on the door curtain (on request)

Speedroller **RETAIL**

These days, supermarkets also have to look attractive. The Retail door puts the finishing touches to a successful in-store presentation. This rapid roll interior door with its opening speed of 2 m/s is not just one of the fastest of its kind, it also opens and closes in near silence. Perfect for energy saving, draught exclusion, climate control and the partitioning of rooms.

Dimensions	
max. width (W)	2250 mm
max. height (H)	2600 mm
max. wind force	3 Beaufort
required lateral space at the guides	170 mm
required lateral space at slip on drive*	300/450 mm
required space above door opening	455 mm
required depth for mounting top hood	650 mm

Components and construction

The Retail has a 0.7 mm thick door leaf made of a polyester-reinforced synthetic material. The closing side of the door curtain consists of a flexible rubber sealing profile. The steel columns ensure the guidance of the door leaf. These form one taut unit with the brackets for the fastening of the roller and protective hood.

Materials

The guides are made of galvanised steel. The roller is made of Aluminium. The protective hood is synthetic. All parts used can be recycled.

Colours

The door curtain is available in the colours blue [standard], orange, yellow, black, grey, red or white. The door curtain can optionally be provided with windows, or the door curtain can be printed with your picture or logo (optionally). The finishing touch for your store!

Drive

The drive consists of an industrial slip on drive with built-in frequency control, as standard mounted on the right side of the roller.

Technical details electric motor

- mains voltage..... LNPE-230V/50Hz/16AT
- degree of protection..... IP65
- consumed power..... max. 1,5 kW

Protection

- safety light curtain (IP65 and to max. height 2500 mm). If this curtain is interrupted by an obstacle the door will automatically fully open until the screen is freed again. This does not apply to the door in closed position.
- mechanical emergency unlocking (after unlocking the door opens).

Performance	
max. opening speed	2 m/s
max. closing speed	0,5 m/s

Structural provisions and connection

- in normal circumstances no special structural provisions are required for the assembly and fitting of a Retail speedroller door. The self-supporting construction must only be fixed at the floor and at the roller.
- there must be a wall socket within a radius of 500 mm of where the control box will be positioned. As standard the wall socket is fitted at a height of approx. 1500 mm from the floor on the drive side. The electrical connection must be a CEE form blue socket, 1 x 230V fused, slow operation 16 A and fitted with an circuit-breaker of at least 300 mA.

Control and operation

The control system regulates a multitude of functions such as:

- regelbare openstandtijd
- continuously variable speed regulation by frequency control, for opening and closing the door
- service and run mode
- 7-segment display for controlling the various functions
- choice of permanently open or permanently shut

Other forms of operation that can be connected to the standard control box:

- operation by pull switch, key-operated switch, push-button, photocell, radar, induction loop detection or by radio control with transmitter and receiver



Beschikbare besturing:

TS971

Extras ¹⁾

Control and operation

- operation by push-buttons, pull switches, photocell, radar, induction loop or by radio control.
- Other forms of operation on request
- door interlock control in combination with another door

Protection

- connection of traffic lights (red/green or red and green) or orange flashing light
- mechanical emergency unlocking on both sides of the door (after unlocking the door opens)
- electrical emergency unlocking (when power fails, the door opens)
- steel bumpers to prevent damage to the guide columns

Construction

- guide columns in customer-specified RAL colour (powder coating)
- full colour printing of the door curtain (on request)

- * Required lateral space for mounting the slip on drive.

There are two versions:

- attach the drive on the shaft **before** mounting the top section, the required lateral space will be 300 mm
- attach the drive on the shaft **after** mounting the top section, the required lateral space will be 450 mm.

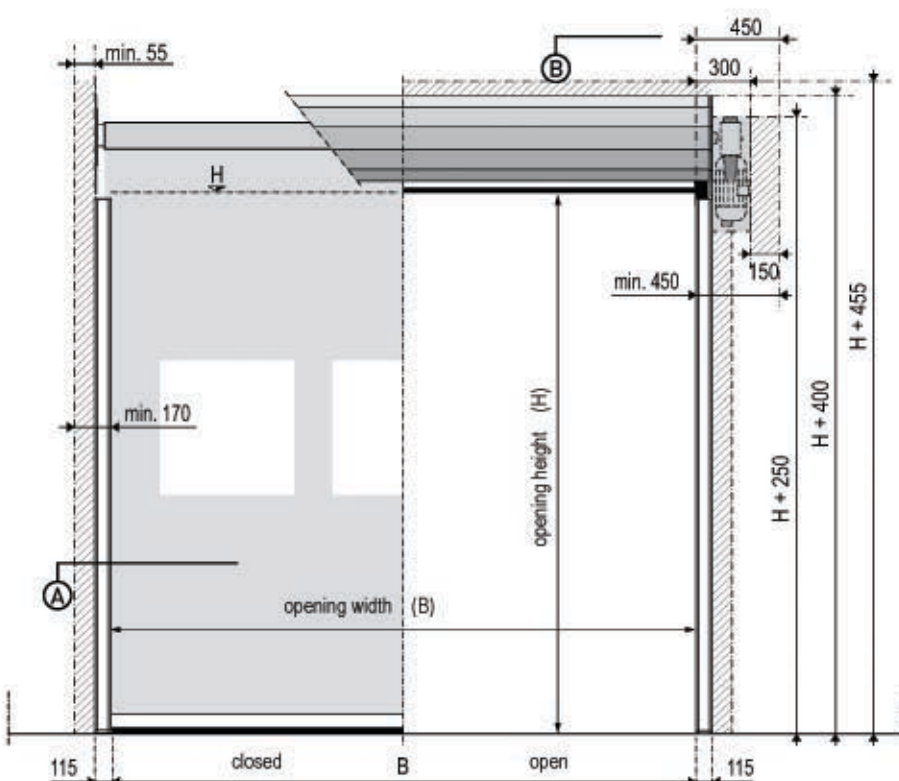
¹⁾ subject to surcharge



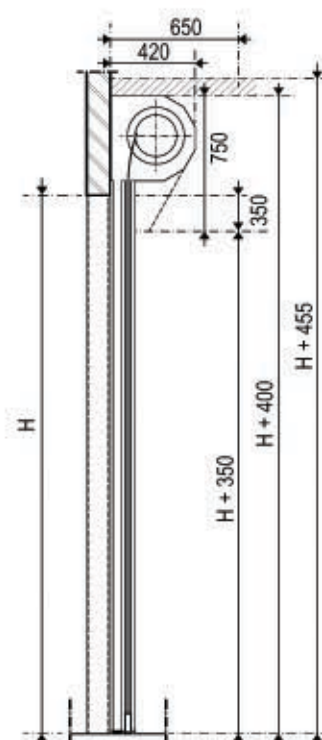
45 Progress Road
Leigh-On-Sea
Essex
SS9 5PR

www.guardiandoors.com
mail@gardiandoors.com

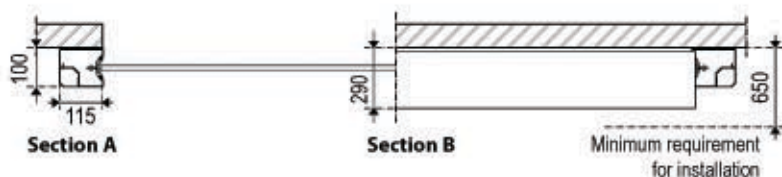
Slip-on drive with spring



Front view



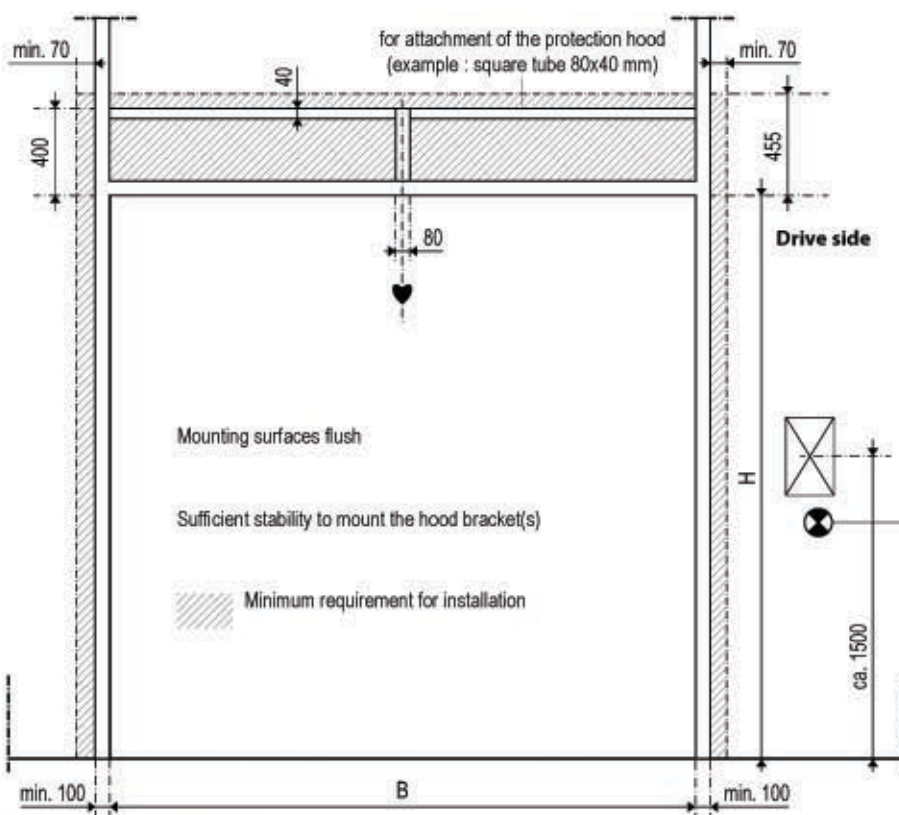
Side view



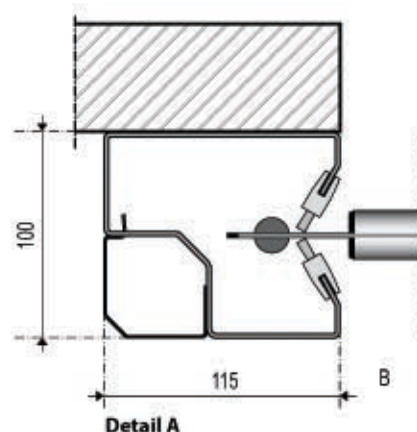
Section A

Section B

Minimum requirement for installation



Installation requirements



Detail A

- ☐ CEE-form 1x230V/50Hz/T16A
- ☐ Electrical supply by others
- ☐ control box/ power supply, inside RIGHT
- ☐ control box/ power supply, inside LEFT



ca. 1500