

ARES
HIGH SECURITY
ANTI CUTTING
ROLLER SHUTTERS



MAX SIZE OF APPROX 90m²
CUT RESISTANT
ACOUSTIC VALUE OF 18DBA
GALVANISED STEEL CONSTRUCTION
RANGE OF CONTROL OPTIONS

The GUARDIAN ARES Anti-Cut Heavy Duty roller shutters has been specifically designed to meet the ever increasing need for security against heavy duty cutting tools. It has a uniquely dimensioned twin skinned lath section in filled with patented anti cut bars. In testing the shutter takes approximately 9 mins to completely cut through using a petrol driven heavy duty circular saw.

IMAGE INFORMATION - SHOWN HERE IS OUR ARES DIRECT DRIVE MODEL ROLLER SHUTTER ALSO SHOWN WITH SAFETY PHOTOCELLS AND OPTO SAFETY EDGE.

SPECIFICATION

SHUTTER CURTAIN

Constructed from pre-galvanised material, designed to provide a hollow section panel with CFC and HCFC free thermal infill. Each panel section is 100mm deep with twin-ribbed face for rigidity. Each alternate panel is to include advanced bonded composite anti-cut bars over the bottom 1.8 metres with added side load fittings

END LOCKS

The curtain is held in position with purposely-designed steel end fittings

SECURITY BOTTOM SECTION

The bottom panel of the shutter is terminated with reinforced colled rolled section optional weather seals are available

BARREL

Manufactured from seamless mild steel tube to BS4760 Grade 50C. Size to suit door width and height. Maximum barrel deflection 1:400. Fitted with precision machined BDMS axles to BS970 EN33 blocks. Sealed with protective paint

MAIN SUPPORT BRACKETS

The main support brackets for the barrel and motor unit are manufactured from mild steel plates of varying thickness and incorporate the necessary fixing positions for securing back to the opening structure

VERTICAL SIDE GUIDES

Formed from pre-galvanised material having a minimum thickness of 2.5mm incorporating twin vertical brushes on both inner and outer face of the guide.

Brush carrier is constructed from PVC of medium impact strength, finished black and incorporating twin siliconised polypropylene weather strips, these running the full height of the door guide. The guide form is designed to allow reduced working faces and tapered inner faces to provide automatic interlocking/retaining feature for performance of retention under wind load

Complete with continuous 100 x 65 galvanised fixing angle

OPERATION

The door is arranged for an electric motor unit with manual hand hoisting and lowering facility. The motor unit is complete with an in-built safety drive system. Operating voltage 400V 3 phase IP54 protection 60% duty cycle maintenance free and TUV tested, complying with all current European safety standards.

SOUND REDUCTION/THERMAL INSULATION

The Ares roller shutter has an accositc sound reduction value of 18dba (BS 5821 Part 3: 1984) and an insulation value of 0.69 through a section.

OPTIONAL EXTRAS

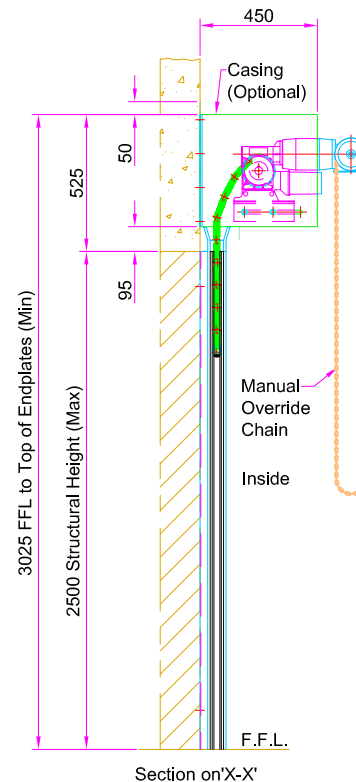
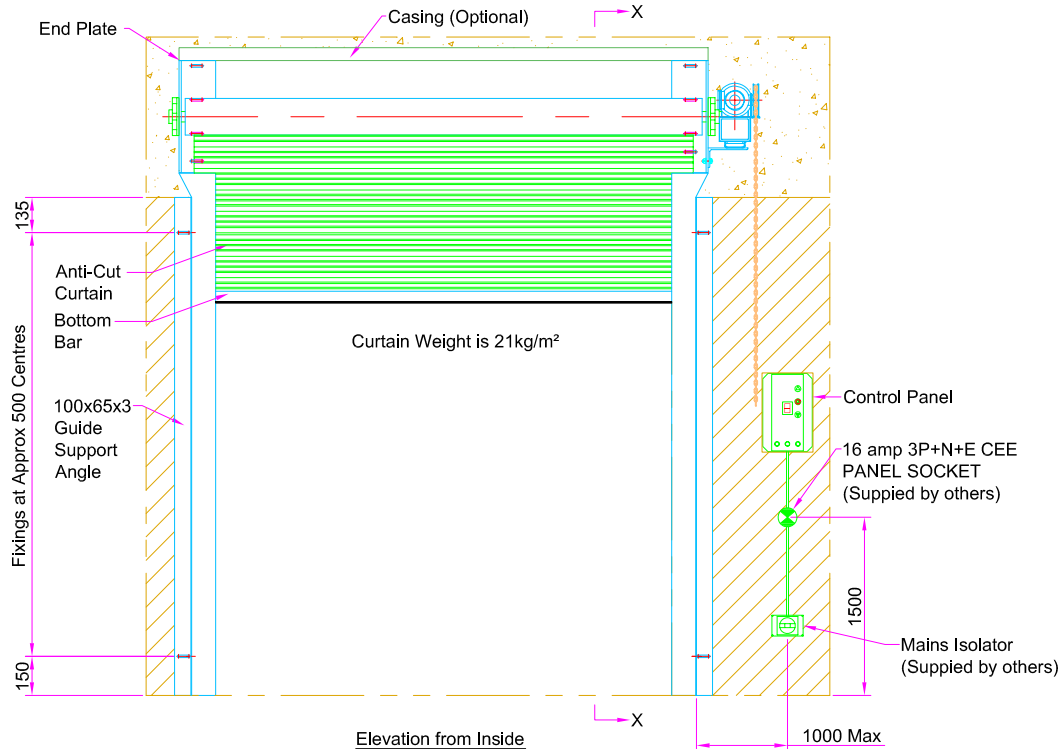
Powder coated finish to any BS or RAL number

Wind bar for larger openings

Auto Bolt system

Sentinel Secondary Security Gate





This drawing is supplied as a General Layout showing relative positions of main components and Guardian Industrial Doors Ltd accepts no responsibility for accuracy until a Site Survey has been undertaken.

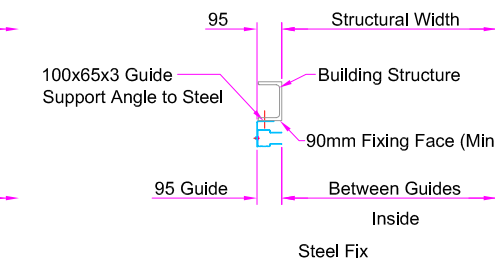
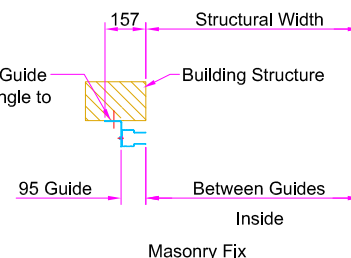
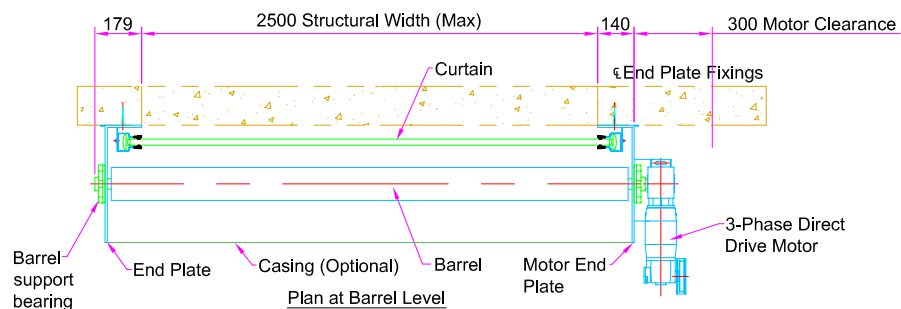
If the End Plates and Barrel are within a False Ceiling or Soffit a Full Width Access Panel Is required. (by others)

Fixing To:-	
Steel	M8/M10 Set Screws
Brick	M8/M10 Rawbolts/Sleeve Anchors
Blockwork	M8/M10 Rawbolts/Sleeve Anchors
Timber	M8/M10 Coach Screws
Concrete	M8/M10 Rawbolts

The Client is responsible for making sure that the structure is capable of withstanding the weight of the shutter and suitable fixing points are available for the End Plate and Guide support channel.

The chart below shows the weight for a shutter with a maximum structural clear opening of 2500mmW x 2500mm H

	Weights (kg)
Barrel	34
Curtain	132
End Plates	20
Guides	29
Angles/Channels	27
Motor/HCG	25
Safety Brake	0
	267



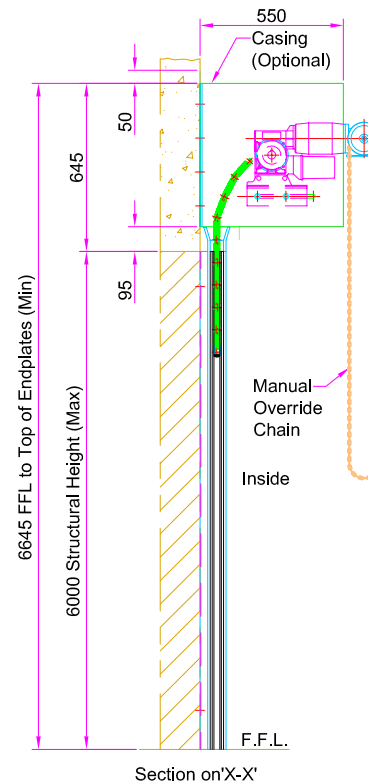
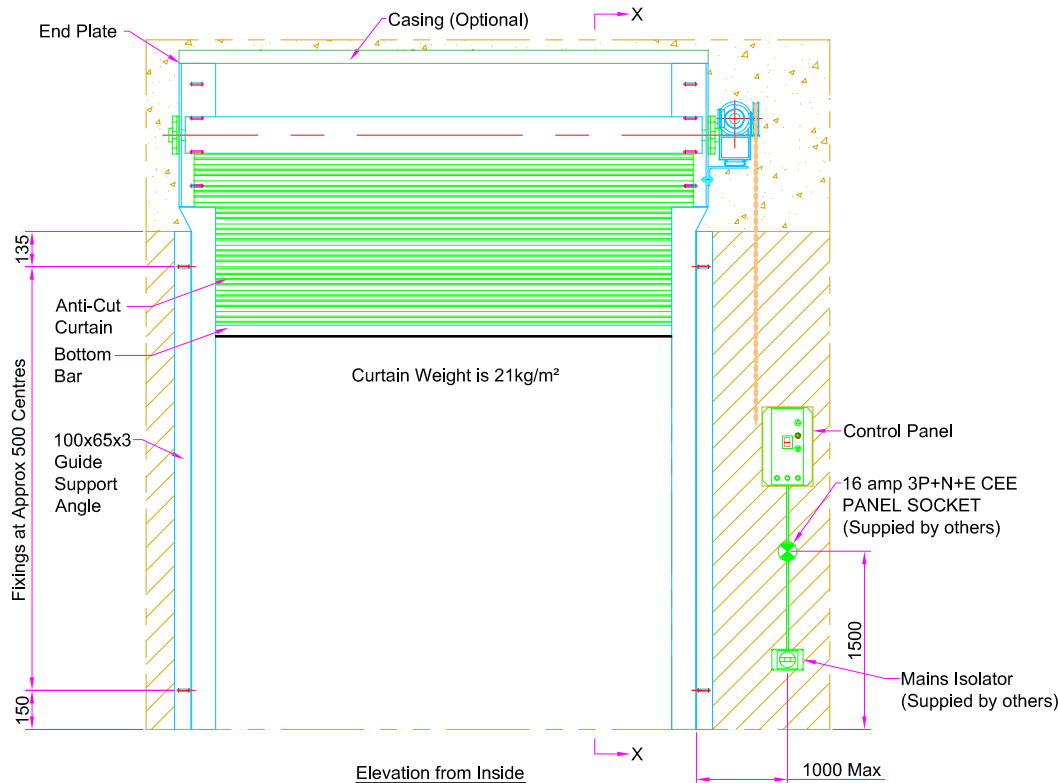
Plans at Guide Level

GUARDIAN
DOOR SOLUTIONS FOR ALL REQUIREMENTS

45 Progress Rd.
Leigh on Sea, SS9 5PR
Tel: +44(0)1702 512424
Fax: +44(0)1702 260117
www.guardiandoors.com

UNLESS OTHERWISE INDICATED
ALL DIMENSIONS IN MILLIMETERS
AND ALL TOLERANCES ± 1.0

DRAWN	CHK'D	APP'D	DATE	SCALE	Drwg No:	ISSUE	DATE	APP'D
MB			01/08/05	1:20@A3	Ares DD-1-FF (RH)			
TITLE Ares II Direct Drive Face Fix 2500mmW x 2500mmH Max					Guardian maintains a policy of progressive design and we reserve the right to modify specifications without prior notice or alteration to this drawing			
						1	05/08	PN



This drawing is supplied as a General Layout showing relative positions of main components and Guardian Industrial Doors Ltd accepts no responsibility for accuracy until a Site Survey has been undertaken.

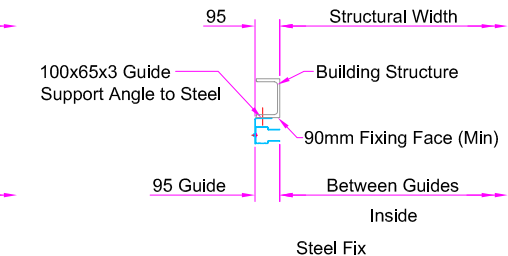
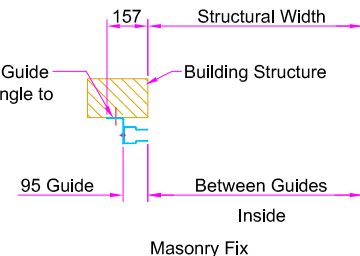
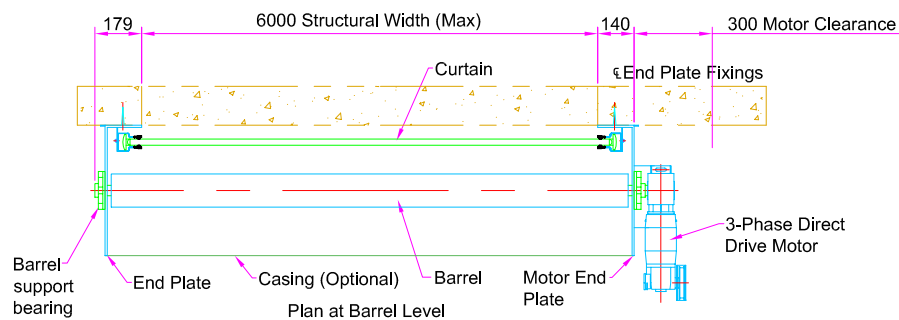
If the End Plates and Barrel are within a False Ceiling or Soffit a Full Width Access Panel Is required. (by others)

Fixing To:-	
Steel	M8/M10 Set Screws
Brick	M8/M10 Rawbolts/Sleeve Anchors
Blockwork	M8/M10 Rawbolts/Sleeve Anchors
Timber	M8/M10 Coach Screws
Concrete	M8/M10 Rawbolts

The Client is responsible for making sure that the structure is capable of withstanding the weight of the shutter and suitable fixing points are available for the End Plate and Guide support channel.

The chart below shows the weight for a shutter with a maximum structural clear opening of 6000mmW x 6000mm H

	Weights (kg)
Barrel	100
Curtain	756
End Plates	24
Guides	68
Angles/Channels	57
Motor/HCG	25
Safety Brake	0
	1030



Plans at Guide Level

GUARDIAN
DOOR SOLUTIONS FOR ALL REQUIREMENTS

45 Progress Rd.
Leigh on Sea, SS9 5PR
Tel: +44(0)1702 512424
Fax: +44(0)1702 260117
www.guardiandoors.com

UNLESS OTHERWISE INDICATED
ALL DIMENSIONS IN MILLIMETERS
AND ALL TOLERANCES ±1.0

DRAWN	CHK'D	APP'D	DATE	SCALE	Drwg No:	ISSUE	DATE	APP'D
MB			01/08/05	1:20@A3	Ares DD-4-FF (RH)			
TITLE Ares II Direct Drive Face Fix 6000mmW x 6000mmH Max					Guardian maintains a policy of progressive design and we reserve the right to modify specifications without prior notice or alteration to this drawing			
						1	05/08	PN

L20 DOORS / SHUTTERS / HATCHES

610 ROLLER SHUTTER

GUARDIAN ARES SECURITY ROLLER SHUTTERS

<http://www.guardiandoors.net/products/roller-shutters/secure/ares>

A range of vertically operating electric rolling shutters. The shutter when open coils up neatly above the opening and does not encroach or cover the roof area behind the door. Designed for high security requirements.

Dimensions:

Opening height up to 6000mm.

Opening width: 6000mm Contact Guardian Doors Technical Department regarding larger sizes

Weight: 35 kg/m² of door opening.

Steel Curtain

0.7mm galvanised steel, each section 100mm deep with a twin-ribbed face. The lath is made up from two individual lath sections held together over their length by the interlocking profile quirk section. The lath is built up together with endlocks to form the complete curtain. Infill is inserted into each lath section to provide a 0.69 W/m²/K U-value. The bottom of the curtain is fitted with an extrusion complete with an interlocking rubber strip.

Roller Assembly

Manufactured from seamless mild steel tube to BS4760 Grade 50C. Size to suit door width and height. Maximum barrel deflection 1:400. Fitted with precision machined BDMS axles to BS970 EN33 blocks. Sealed with protective paint.

Endplates

Roller barrel assembly supported by mild steel endplates with mounting angles for connection to structure.

Side Guides

Cold rolled galvanised mild steel to form a channel section of adequate depth. Guides are fitted with a mild steel mounting angle in order to secure the guides to the opening structure. Plastic wear resistant strips are fitted to the toes of the guides.

Brush Strip

Aluminium extrusion with nylon brush for installation to structural soffit of the opening.

Electric Motor Operation

The door is arranged for an electric motor unit with manual hand hoisting and lowering facility. The motor unit is complete with an in-built safety drive system. Operating voltage 400V 3 phase IP54 protection 60% duty cycle maintenance free and TUV tested, complying with all current European safety standards. **Finish**
All parts not galvanised are painted one coat protective primer (ex works), ready for site painting by others.

Colour finishes

Curtain available in Platisol colours or powder coated finish from BS 4800 or RAL colour ranges. Powder coat finish may also be applied to other components, i.e. guides, bottom rail, hood, motor cover etc.

Consult with Guardian Industrial Doors Ltd technical literature for details. Guardian Doors can also provide a design and specification advisory service and it is recommended that they are consulted early in the design process.

Manufacturer: GUARDIAN INDUSTRIAL DOORS 45 Progress Road Leigh On Sea Essex, SS9 5PR Tel: 01702 512424. Fax: 01702 510015. Email: mail@guardiandoors.com Web: www.guardiandoors.com

Optional Upgrades

Security

Autobolt - Automatic high security locking system.

Sentinal gate system - <http://www.guardiandoors.net/products/seconday-gates/sentinal-gates-model-overview>

Construction

Stainless steel components Brush strips

Nylon brush strips available to side guides on a mill finish aluminum carrier.

Hood cover

Formed from galvanised steel to enclose the rear of the shutter coil. Also available with powder coat finish.

Motor cover

Formed from galvanised steel to encase the electric motor unit. Also available with powder coat finish.

Controls

A wide variety of electrical controls and automatic control systems are available. Key switches, external control buttons, induction loops, radar activation, radio control, timed close facility, key pad access, etc.

Operation and Controls

High speed motors - operating speed may be increased in order to provide faster opening and closing times.

Explosion proof motor – For use in hazardous environments

Safety Systems

Safety bottom edge to underside of bottom rail; (Wireless version available) if safety bottom edge strikes an object the shutter stops and returns to the open position. Also available are photocell beams; if beam is broken by traffic through the opening the shutter stops and returns to the open position.

For further information, contact Guardian Doors Technical Department.